

Gee I Wish I Had Known That

Removal of a Rear End From a GM A-Body

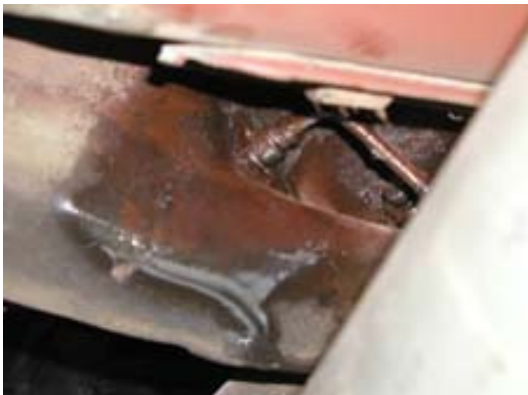
These are the steps my son and I went through to take the rear end out of his 1969 Oldsmobile Cutlass. You could follow the same steps for a Chevelle.



Below is my son removing the tires.



Soak every thing up with penetrating oil
(This is the brake line fitting)



First thing we did was to jack the car up so we had lots of room to work. I like blocks of wood over jack stands as they seem to provide a much more stable car to work on when you start to get it up high off the ground. We put the plastic down as the under side of the car will be sand blasted after the rear end has been removed.

Below are the items we removed to provide easy access to control arm bolts



Note orientation of springs so they can be put back in the same position



Support the rear end



Remove the shocks



Lower the rear end and remove the springs



Remove bolts from the control arms



Remove the rear end from the car



Now you have to remove the bushings from the rear end



We ground the lip off the bushing



so a ball joint press would fit over it



We pushed the bushing part way out



and use an air chisel to get it all the way out



Ready for detailing

